

# Bioinformatics Core Facilities: Setting Priorities

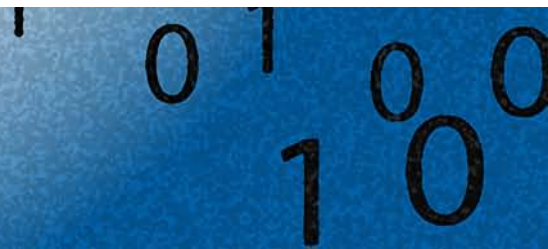
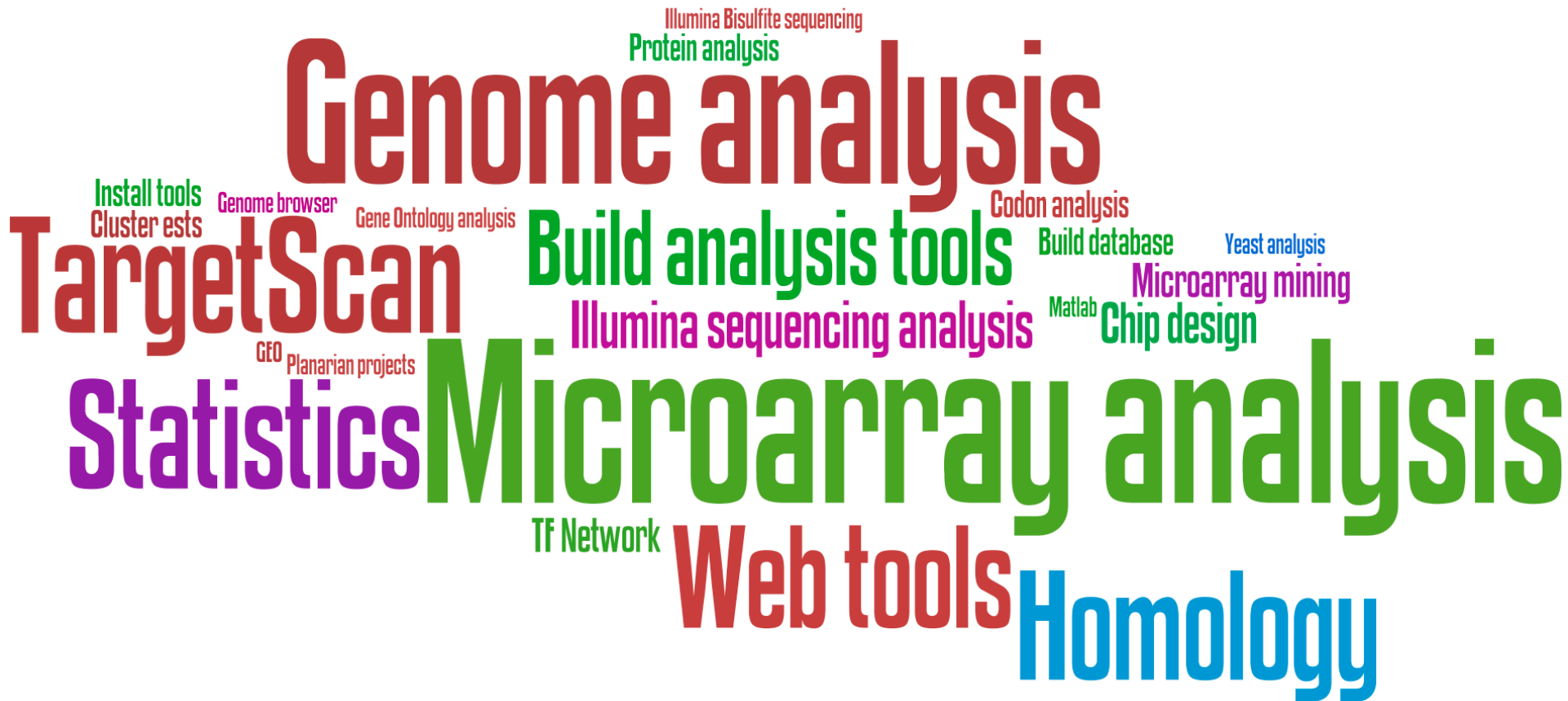
Fran Lewitter, Ph.D.

Director, Bioinformatics and Research  
Computing, Whitehead Institute for  
Biomedical Research, Cambridge MA

# The Group



# What we do



# Priorities

1. Publication
2. Grant
3. Ongoing experiments
4. Exploratory research

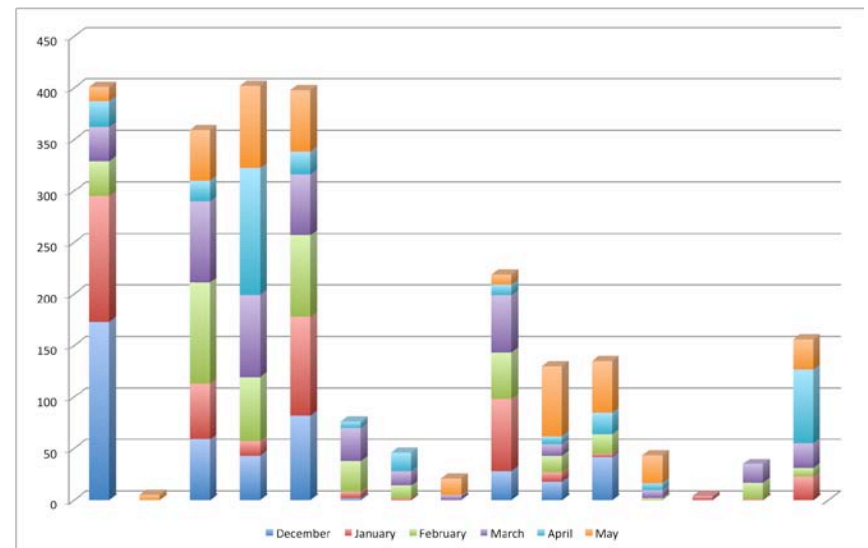


# Play Fair

## Issues to consider

- W/I & between labs
- Short vs Long projects
- Specialization of core members
- What should & shouldn't we do
- Education & tools
- Coauthorship

## Use by Lab during 6 mos.



# Issues

## **1. Within and between labs**

- What do you do with 5 requests from one lab?
- Community perception

## **2. Short vs long projects**

- Project milestones
- Communication

## **3. Specialization of core members**

## **4. What should we do? What shouldn't we do?**

## **5. Education and tools**

## **6. Publications**

# PLoS Computational Biology

## June 2009

- **The Need for Centralization of Computational Biology Resources**  
Lewitter, Rebhan, Richter, Sexton
- **Establishing a Successful Bioinformatics Core Facility Team**  
Lewitter, Rebhan
- **Managing and Analyzing Next-Generation Sequence Data**  
Richter, Sexton